

Violin I

Preludio a Colon

by Julian Carrillo

adapted by Paul Clift

A ♩ = 72 *molto espressivo* →

1 2

mf 6 6 6

6 6 6 6 6

5

rall.

6 6 6 6 6 6 6

--- **B** A tempo 10

2

6 4 6 2 7 4

rall.

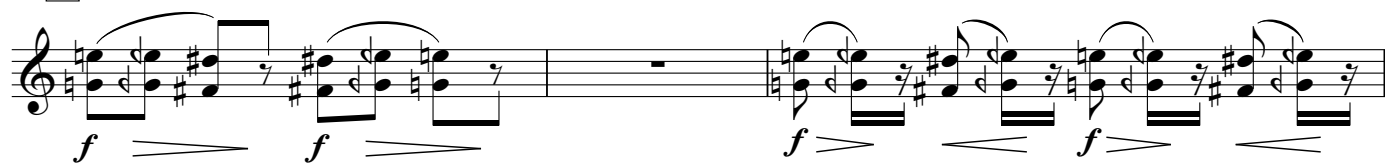
15 **C** 2

p < > *mp* 6 6 6

--- A tempo

2

Violin I

2 **D**

25

E

30

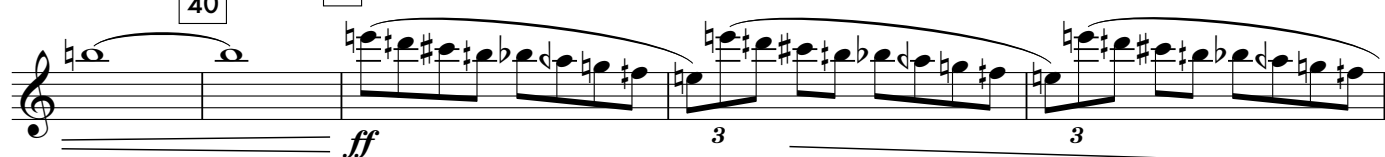
rall. ♩ = 52

**F** A tempo

35



40

G

45

morendo

50

